

ASSA Connect 220-series

Lock Cases



Application

Double latch locks. Lock cases for exterior and interior doors, entrance doors, technical areas etc.

Features

- Available with backset 70, 50 and 35 mm
- With cylinder, deadlocking and lever latch
- The cylinder latch deadlocks automatically when it is extracted 14 mm and the deadlocking latch is depressed
- Available with a built-in micro switch
- The cylinder latch can be locked back
- Handing of the latches is reversible
- Hardened steel lever latch for fire-rated doors
- Can be combined with electric strikes
- Used together with ASSA strike 1264-1, 8
- All lock cases within 220-series are CE-certified

Function

- Cylinder, deadlocking and lever latch are retracted with key or thumbturn
- The lever latch is retracted with lever handle

The lock-back mechanism in the face plate has the following functions:

- 220 Cylinder latch is locked back with snib
- 221 Cylinder latch is locked back with a token key
- 222 Cylinder latch cannot be locked back
- 223 Cylinder latch is locked back with snib equipped with a locking nut. The snib can be secured in locked back or normal position

Environment

This product is designed to during its life cycle provide minimal impact on the environment. The product is recycled as scrap metal. Any micro-switches are separated and recycled as electronic waste.

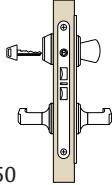
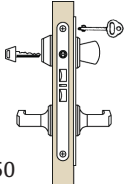
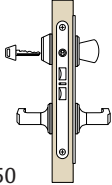
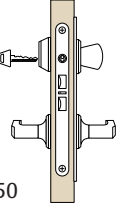
ASSA[®]
ASSA ABLOY

ASSA Connect 220-series

Lock Cases

Entrance and interior doors

Lock case for entrance and interior doors where the requirements of burglary resistance are subordinate the function.

Lock case	Application	Exterior function		Interior function
ASSA 220-50 220-70 220-35	Lock case for exterior and interior doors, entrance doors, technical areas etc.	A 90° turn of key revokes the deadlock and retracts the latch bolt. Lever handle retracts latch bolt.	 220-50	A 90° turn of thumb turn revokes the deadlock and retracts the latch bolt. Lever handle retracts latch bolt. Cylinder latch is locked back with snib.
ASSA 221-50 221-70 221-35	Lock case for exterior and interior doors, entrance doors, fire doors, technical areas etc.	A 90° turn of key revokes the deadlock and retracts the latch bolt. Lever handle retracts latch bolt.	 211-50	A 90° turn of thumb turn revokes the deadlock and retracts the latch bolt. Lever handle retracts latch bolt. Cylinder latch is locked back with a token key.
ASSA 222-50 222-70 222-35	Lock case for exterior and interior doors, entrance doors, fire doors, technical areas etc.	A 90° turn of key revokes the deadlock and retracts the latch bolt. Lever handle retracts latch bolt.	 222-50	A 90° turn of thumb turn revokes the deadlock and retracts the latch bolt. Lever handle retracts latch bolt. Cylinder latch is locked back with a token key.
ASSA 223-50 223-70 223-35	Lock case for exterior and interior doors, entrance doors, fire doors, technical areas etc.	A 90° turn of key revokes the deadlock and retracts the latch bolt. Lever handle retracts latch bolt.	 223-50	A 90° turn of thumb turn revokes the deadlock and retracts the latch bolt. Lever handle retracts latch bolt. The cylinder latch is locked back with snib equipped with a locking nut. The snib can be secured in locked back or normal position.

ASSA®

ASSA ABLOY

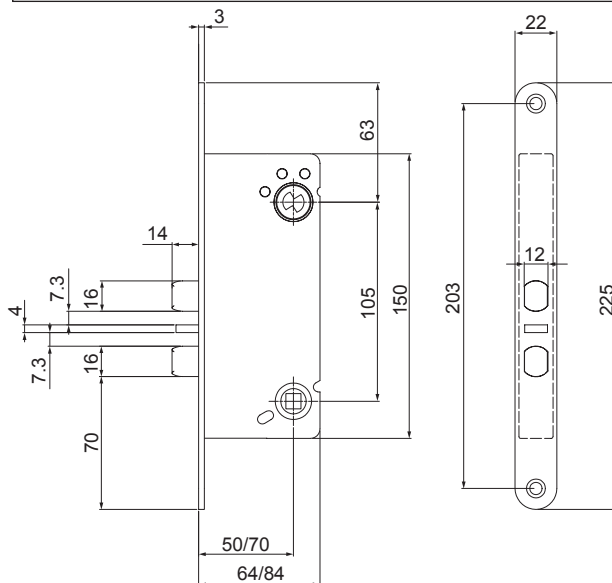
ASSA ABLOY, the global leader in door opening solutions, dedicated to satisfying end-user needs for security, safety and convenience.

ASSA AB
P.O. Box 371
SE-631 05 Eskilstuna
Sweden

phone +46 (0)16 17 70 00
fax +46 (0)16 17 72 10

Customer support:
phone +46 (0)771 640 640
fax +46 (0)16 17 73 72
e-mail: helpdesk@assa.se

www.assa.se



Dimension drawing,
Connect 222-50/70